

WELCOME	
GENERAL INFORMATION	1
Identification Requirements	2
Emergency Phone Numbers	3
Guests Under 21	4
Changing Your Itinerary	4
Immunization	4
Customs Information	4
Guests with Disabilities	5
Pets	6
Alcoholic Beverages Brought Onboard	6
CRUISE PREPARATION	6
Baggage Policies & Packing Advice	7
Clothing	8
Preparing For Your Flight	8
Bon Voyage Gifts & Gift Packages	8
Weddings	9
As You Wish™ Dining	9
Dining Venues	9
Last-Minute Check List	10
ARRIVAL ADVICE	10
Arrival Instructions	11
Airport Taxes	11
Airline Delays	11
Transfer Policy & Information	11
Boarding Procedures	12
Visitor Policy	12
SHIPBOARD LIFE	13
Activities On Board	13
Shore Excursions	13
Our Commitment to the Environment	14
Club HAL® Youth Program	15
Services on Board	15
Shipboard Meals	17
Medical Facilities & Services	17
Smoking Policy	18
Communication at Sea	18
Shipboard Account	19
Currency Exchange	19
Hotel Service Charge	19
Signature Express Baggage Service	19
DISEMBARKATION	20
Disembarkation Procedures	20



General Information

Identification Requirements	2
Emergency Phone Numbers	3
Guests Under 21	4
Changing your Itinerary	4
Immunization	4
Customs Information	4
Guests with Disabilities	5
Pets	6
Alcoholic Beverages Brought Onboard	6

IDENTIFICATION REQUIREMENTS

Immigration Questionnaire: Each individual guest is required to complete this form prior to embarkation.

While this form is located in your documentation package, we strongly encourage you to expedite your check-in experience by utilizing our Online Check-In option on our website at www.hollandamerica.com. All guests who complete Online Check-In will be issued a Signature Preferred Boarding Pass. Don't forget to print out your Signature Preferred Boarding Pass prior to check-in. If you are unable to use our online service, please have a completed Immigration Questionnaire with you during embarkation formalities at the pier. The identity and address information in the Questionnaire are required in many jurisdictions.

Please Note: Online Check-In must be completed at least **72 hours** prior to your sail date. Guests arriving at embarkation without complete and accurate documentation may not join the voyage and will not be entitled to a refund.

Check-in process at www.hollandamerica.com before leaving home. Guests who wait to check in at the terminal risk being unable to sail even if they arrive at the terminal before the vessel leaves. You will be responsible for all costs you incur to join the vessel at the next port.

PASSPORT REQUIREMENTS

Holland America Line highly recommends that all guests carry a passport that is valid for at least six months beyond the completion date of your travel. This will enable guests to fly from the U.S. to meet their ship at the first port should they miss their scheduled embarkation and allow guests that must disembark the ship before their cruise ends due to an emergency to fly back to the U.S without significant delays and complications. Guests are responsible for all costs associated with their travel including but not limited to costs related to arrangements to obtain entry to countries they visit and re-entry to their destination country.

The Western Hemisphere Travel Initiative (WHTI) is a result of the Intelligence Reform and Terrorism Prevention Act of 2004 (IRTPA) and establishes document requirements for travel into the United States from Canada, Mexico and the Caribbean region (includes 17 nations). The goal of the initiative is to strengthen U.S. border security while facilitating entry for U.S. citizens and legitimate foreign visitors by providing standardized documentation that enables the Department of Homeland Security to quickly and reliably identify a traveler. The Land and Sea requirements became effective June 1, 2009.

U.S. and Canadian Citizens: Air Travel: For the U.S. government's first phase of the Western Hemisphere Travel Initiative (WHTI), a valid passport is required

for air travel between the United States to/from Canada, Mexico, Bermuda and countries of the Caribbean.

Effective June 1, 2009, with the implementation of the final phase of the WHTI, Non-U.S. citizens, U.S. citizens crossing U.S. borders by sea and/or land, or U.S. citizens on a cruise that embarks in one U.S. port and disembarks in another U.S. port must carry one of the following documents:

- Passport
- Passport Card
- State Issued Enhanced Driver's License
- Other documents approved by the Department of Homeland Security

For a list of approved documents visit:

http://travel.state.gov/travel/cbpmc/cbpmc_2223.html#compliant_document

Effective June 1, 2009, there is an exception for U.S. citizens on a **closed-loop cruise, which embarks and disembarks in the same U.S. port and visits Canada, Mexico, Bermuda and/or countries of the Caribbean.** In order to travel on a closed-loop cruise, U.S. citizens will be required to carry proof of citizenship, such as a birth certificate, and government issued photo I.D.

Children: U.S. citizen children under the age of 16 will be able to present their birth certificate, or other proof of U.S. citizenship, such as a naturalization certificate or citizenship card. Birth certificates can be an original, photocopy or certified original. For more information, please visit www.travel.state.gov/passport or call the National Passport Information Center toll free at 1-877-487-2778 or TDD/TYY at 1-888-874-7793.

For travel outside of the Western Hemisphere countries U.S. and Canadian citizens must have and carry a passport valid for six months beyond the completion date of your travel.

Non-U.S./non-Canadian citizens: You must have and carry a passport valid for six months beyond the duration of the cruise. Please carefully verify the existing identification requirements for your particular travel situation. In addition, non-U.S. citizens who have previously been admitted to the United States for permanent residence must carry their Permanent Resident Card (Form I-551), commonly known as a Green Card. Resident aliens not in possession of this must obtain one at the nearest office of the U.S. Immigration Service.

VISAS

Some countries require that you obtain official authorization (called a visa) before entering the country. Usually a fee is required. You are responsible for obtaining any necessary visas. If you do not hold proper visa documents, you could be denied boarding without compensation. Guests who do not have the proper legal identification, visas and other required documents, will be denied boarding. Each guest's nationality and status is unique. It is the guest's responsibility to obtain any necessary legal documents for entry and exit to the countries visited.

For U.S. or Canadian citizens, if you have questions about visa requirements, you may call Zierer Visa Service at 1-(866)-788-1100 or send an email message to: info@zvs.com or visit their web site: <http://www.zvs.com/home.aspx?login=75005>

Non-U.S./non-Canadian citizens may be required to hold a Canadian visa when traveling to Alaska or Canada. Please visit the Canadian government website at www.cic.gc.ca/english/visit/visas.asp to verify your nationality's requirements.

Schengen Visa Holders (applies to those EU-member citizens only): New requirements pertaining to proof of medical insurance coverage have been adopted for all Schengen visa holders. This requirement does not apply to U.S. or Canadian citizens. All guests should keep themselves advised of changes in government requirements. If you have questions about visa requirements, call Zierer Visa Service at 866-788-1100 or local 202-745-4470. You may also choose to send an email message to: info@zvs.com or visit their website at: www.zvs.com.

Visa Waiver Program: The US Government has implemented a new policy requiring citizens from Visa Waiver Program (VWP) countries to register online with the US Government via the Electronic System for Travel Application (ESTA) prior to entering the United States and its territories.

Please refer to http://travel.state.gov/visa/temp/without/without_1990.html#countries for a listing of Visa Waiver Program countries.

Effective January 12, 2009, all VWP travelers will be required to obtain an electronic travel authorization prior to boarding a carrier to travel by air or sea to the U.S. under the VWP.

After January 12, 2009, VWP travelers who do not apply for and receive this on-line travel authorization via ESTA prior to travel will experience delayed processing or may be denied admission at a U.S. port of entry. The only exception to this requirement would be citizens of the Visa Waiver Program countries **who hold a valid US visa or who are a U.S. Resident (ARC-“Green Card” holders)**. This online process is available at <https://esta.cbp.dhs.gov/>.

If an ESTA authorization is secured, the ESTA authorization online confirmation receipt must be provided during ship check-in formalities.

ESTA authorization is free of charge, valid for two years and multiple entries. Additional information regarding the VWP and ESTA is available at www.cbp.gov/esta.

ESTA does not affect U.S. or Canadian citizens.

All cruise guests are responsible to obtain and have in their possession the proper documentation prior to boarding their cruise. Guests who do not have proper documentation will not be allowed to board the ship, will be responsible for any related costs and will not be eligible for a refund.

CRUISE DOCUMENTS

Introducing Holland America Line Express Docs Eco-friendly Cruise Documents.

Preparing for your Holland America Line cruise is now easier, faster and more convenient than ever. With Express Docs, your cruise documents are available up to 60 days before your cruise departure date, and you can print part – or all – of your Express Docs when it's most convenient for you, 24/7. This includes your boarding pass, itinerary, any applicable vouchers, and if you booked air with Holland America Line, air travel information. Your information is encrypted, secure, easily updated and ready to email or print for yourself, family and friends as often as you wish. No more waiting for printed cruise documents.

What's more, since our eco-friendly cruise documents are delivered electronically, they help save paper and conserve precious fossil fuels.

Visit www.hollandamerica.com/ExpressDocsFAQs for more information.

To learn more about Holland America Line's ongoing commitment to environmental stewardship and conservation in all of our operations, visit www.hollandamerica.com/sustainability.

Paper Documents: Guests who receive paper documents will find a complete set of documents for your trip in your Holland America Line document wallet. Your paper documents booklet contains your cruise ticket & contract, specific arrival information, vouchers (if applicable) and an itinerary tailored to your specific travel plans. Please review all of your documents, including the cruise contract, as they contain important information. (For your flight information, please see the PREPARING FOR YOUR FLIGHT section.)

EMERGENCY PHONE NUMBERS

At some point in your travels you may experience an emergency. With this in mind, the following emergency phone numbers are available for your use. Representatives are on hand to assist you in any way they can, including assistance with travel delays and contacting loved ones

During our regular business hours (5:00am to 7:00pm Monday through Friday and from 7:00am to 3:30pm Saturday and Sunday, Pacific Standard Time/UTC-8), please call 1-800-426-0327. Outside of our business hours and during holidays, or if you are calling from outside of the United States/Canada, please call 206-301-5293*.

**The number is for emergency use only; please do not call unless you are experiencing an emergency of a critical nature.*

For information concerning airline delays, please see the AIRLINE DELAYS section.

GUESTS UNDER 21

Guests under 21 years of age must be accompanied by a parent, guardian or chaperone that is at least 21 years old; one adult chaperone is required for every five people under the age of 21. Alcoholic beverages will not be served to guests under age 21. Due to the limited medical facilities on board, we will not accept reservations for infants 6 months or younger for non-Transocean sailings, 12 months or younger for Transocean sailings at time cruise commences or women who will be 24 or more weeks pregnant at the time their cruise with Holland America Line concludes.

Minors under age 18 traveling to foreign countries must be accompanied by both parents or have a notarized letter of consent signed by the parent(s) not traveling. If the other parent is deceased or the child has only one legal parent, a notarized statement must be obtained as proof. Your travel professional can provide additional information about this requirement.

Please Note: In an effort to prevent international child abduction, many governments have initiated procedures at entry and exit points. These often include requiring documentary evidence of relationship and permission for the child's travel from the parent(s) or legal guardian if not present. Having such documentation on hand, even if not required, may facilitate entry or departure. For specific information regarding the country to which you are traveling, please visit <http://travel.state.gov> for country-by-country information.

Parents, guardians and chaperones are responsible for overseeing the conduct of minors in their care. As such, minors may not be left unsupervised on board the ship. Minors should receive the same oversight that would be provided when visiting locations such as a large resort or theme park. A parent or legal guardian **MUST** accompany all children under the age of 18 on all tours for safety and liability reasons. For activities and programs for children ages 3-17, please refer to the CLUB HAL YOUTH PROGRAM section.

CHANGING YOUR ITINERARY

With very limited exceptions (such as some Panama Canal cruises), U.S. law prohibits persons from beginning their cruise in one U.S. port and ending it in a different U.S. port. For this reason, voyages originating and ending in the same U.S. port will not allow embarkation or disembarkation in an alternate U.S. port. **Please note that this is a U.S. government regulation over which Holland America Line has no control.**

IMMUNIZATION

Immunization requirements change frequently. These requirements are established by the countries you are visiting and not by Holland America Line. For this reason you should contact your local physician, Health Department and/or travel medicine clinic to discuss immunization requirements for all countries on your itinerary.

Yellow Fever: Many Yellow Fever immunization requirements are based on traveling from one "infected" or "endemic" country to another. It is also a good idea to bring along a record of your immunizations, as requirements for immunizations may change.

Mosquito-borne illnesses: Malaria, dengue fever and yellow fever are found in many tropical and subtropical areas of the world. Guests should always travel with appropriate clothing and mosquito repellent with DEET or Picaridin to reduce the risk of mosquito bites. In addition, please check with your primary care provider or local travel medicine clinic to see what, if any, immunizations or other measures are recommended for your specific itinerary.

CUSTOMS INFORMATION

In order to make returning home as smooth and easy as possible, please take note of the following tips. For more information, consult your Customs Agency. Guests returning to the United States can also check the official website of U.S. Customs at www.customs.gov.

Registering Your Valuables: We strongly recommend that you register your valuables with Customs before leaving home. This should be done well in advance of travel at a Customs office near your home. Items that should be registered generally include those not manufactured in your country. If you cannot prove that you owned an item prior to departure, Customs officials may charge you duty to bring it back into your country.

Customs pays particular attention to cameras (including special lenses and video equipment), binoculars, radios, laptop computers, foreign-made watches and other similar appliances. Customs officials will not be available at the ship during check-in to register valuables.

Transportation of Currency: You may take as much currency or as many monetary instruments as you wish on your trip. However, if you take out or bring into the United States more than US\$10,000, you are required by law to file a report with the U.S. Customs Service. Also for Canada, you need to be declared if you take out or bring into more than CAD\$10,000. Please remember that many other countries have a similar policy when going ashore and you will be subject to their currency allowances at the current exchange rate. Any additional information concerning currency restrictions, please contact the customs agency in their country.

Customs Allowance: Each U.S. resident is usually allowed a duty free exemption of US\$800; it may be more or less depending upon your itinerary and recent travel outside the country. An additional US\$1,000 worth of articles may be brought in and taxed at a reduced flat duty rate. After an absence of seven days or more, Canadian citizens may bring back to Canada up to CAD\$750 worth of duty-free merchandise, which may include a maximum of 40 ounces of liquor or wine and 200 cigarettes. Guests who are neither U.S. nor Canadian citizens should check with the Customs agency in their country for allowance information before departing. Additional information concerning Customs matters will be provided during your cruise.

GUESTS WITH DISABILITIES

Holland America Line does not discriminate against persons on the basis of disability. We seek, to the extent feasible, to accommodate guests with disabilities. Holland America Line offers a limited number of staterooms designed to be wheelchair and scooter accessible. For the safety of all guests and crew, scooters and other mobility equipment need to be securely stored and charged in the guest's stateroom, and not in hallways or elevator lobbies. Scooters left in these areas could restrict people needing to travel through these areas in an emergency, particularly other guests using mobility aids, since they would have no way of getting by a scooter left in a hallway. For this reason, Holland America Line has size and weight guidelines for scooters. If you plan on bringing a scooter on the vessel, please contact:

Access & Compliance Department

Phone: 1-800-547-8493

(or locally at 206-281-3535, ext. 4514)

TTY: 1-800-254-8669

Email: halw_access@hollandamerica.com

Certain ship transfer operations (i.e. during tendering and at the gangways) may not be fully accessible to wheelchairs or scooters. When a ship is unable to dock, guests are taken ashore on smaller boats called tenders. Some guests with limited mobility may find it difficult to embark or disembark the ship at certain times while at dock or while tendering due to steep gangways and steps, particularly during low or high tide. Also, please note that scooters and wheelchairs which are more than 100lbs without the battery are not allowed to be transferred from the ship to tender and/or from tender to shore.

For persons not capable of walking on their own, the use of a wheelchair will be the primary mobility assistance aid for getting on and off the ship. In some situations, mobility assistance will involve carrying guests. Situations may occur in which guests with mobility impairments may not be able to go ashore at the time they desire or are unable to go ashore at all in certain ports. For the safety of all concerned, the Captain shall make the final determination regarding the carrying of guests with mobility impairments and their mobility assistance device (wheelchair, scooter, walker, etc.), taking into account all appropriate matters including, but not limited to, weather conditions, ship's location, weight of the guest, etc. While every effort is made to assist guests, we are unable to provide staff members who can spend all or most of their time working with a single guest in order to address ongoing special needs. Guests who require that level of care will need to travel with a companion who is able to provide them with the assistance necessary. Certain third-party transfer and shore excursions facilities may not be fully accessible to guests with disabilities. Although we endeavor to make sure these companies comply with legal requirements, we cannot guarantee all are able to provide facilities

that are accessible to persons with disabilities. For detailed, up-to-date information on accessibility issues involving shore excursions, we strongly recommend contacting our Shore Excursions Department prior to embarkation at 888-425-9376 (or locally at 206-281-3535 x3021) or visiting the Shore Excursions Office on board. For detailed, up-to-date information on accessibility issues involving shore excursions, we strongly recommend contacting our Shore Excursions Department prior to embarkation at 888-425-9376 (or locally at 206-281-3535 x3021) or visiting the Shore Excursions Office on board.

It is essential that we be notified of any special medical, physical or other requirements you may have (including whether you intend to bring a scooter with you) as soon as possible, preferably at the time of booking, so that we may make our best effort to accommodate you. Guests who are unable to care for their own basic needs (e.g. dressing, eating and attending safety drills) MUST have a capable traveling companion. In limited situations (either on board or ashore), we may find it necessary to ask an individual to make alternative travel arrangements, such as if an individual with a disability is unable to satisfy certain specified safety and other criteria, even when provided with appropriate auxiliary aids and services. The medical staff on board is not available for daily care unless an individual is hospitalized in the ship's Medical Center.

Wheelchairs: Holland America Line has a limited supply of wheelchairs on board. In order to accommodate our guests, wheelchairs are reserved exclusively for embarkation and disembarkation assistance in the pier facility and emergency situations. Holland America Line is no longer able to provide complimentary wheelchair assistance other than for purposes listed above. If you will require the regular use of a wheelchair, we recommend that you bring your own wheelchair with you. You may also make advance rental arrangements prior to sailing and have a wheelchair delivered directly to the ship. For additional details on the pre-arranged rental program, please see the contact information listed below for Special Needs at Sea or CareVacations.

Oxygen: Any guests needing continuous or intermittent oxygen for chronic conditions must make their own arrangements prior to travel. Please contact us, or your travel professional, for more information. The following companies have been approved for all oxygen and/or oxygen equipment being delivered to a Holland America Line vessel:

Special Needs at Sea

Phone: 1-800-513-4515

Fax: 1-800-513-4516

Email: info@specialneedsatsea.com

CareVacations/CruiseShipAssist

Phone: 1-877-478-7827

Fax: 780-986-8332

Email: csa@carevacations.com

Oxygen and/or oxygen equipment deliveries will NOT be accepted from any other company.

You are welcome, however, to bring your own oxygen and/or oxygen equipment from your home. Please note that our staff and crew are not permitted to handle your oxygen and/or oxygen equipment during the embarkation and disembarkation process, thus you must be able to handle your supplies if you bring your own. Please contact the Access & Compliance Department prior to sailing if you will require oxygen while on your cruise. If you require additional information on the ship's facilities or ability to accommodate your needs, please feel free to contact the Access & Compliance Department.

Please Note: Some airlines have restrictions concerning traveling with oxygen and oxygen containers. It is the traveler's responsibility to be familiar with and comply with the regulations of the airline on which he/she is traveling.

For information regarding the Transportation Security Administration's Screening Tips for Persons with Disabilities, please visit the Travelers with Disabilities and Medical Conditions section of their website at www.tsa.dhs.gov/travelers/airtravel/specialneeds/.

PETS

With the exception of qualified service animals for guests with disabilities, animals or pets are not allowed on board. If you plan to bring a service animal, you must call our Access & Compliance Department. (Please see the contact information in the GUESTS WITH DISABILITIES section.) You will need to provide health certificate documentation for the animal. Please note that Holland America Line cannot provide information regarding entry requirements of service animals in foreign countries. It is the sole responsibility of the guest to research each port of call visited on their itinerary and obtain the correct documentation and immunization information for the countries they are visiting. Please talk to your travel professional about this requirement or consult the US Department of Agriculture.

ALCOHOLIC BEVERAGES BROUGHT ON BOARD

Except for wine and champagne, alcoholic beverages purchased in the ship's stores or otherwise brought on the ship cannot be consumed on the ship. Bottles and other containers will be collected for safekeeping and delivered to your stateroom on the last day of the voyage. The ship's stores sell liquor for take-home only at reduced tax-free prices. These purchases will be delivered to your stateroom on the last day of the voyage. A corkage fee of US\$18.00 (subject to change) applies to wine and champagne brought to the restaurants or bars for consumption. In-Room Dining offers reduced-price stateroom beverage packages for in-stateroom consumption of alcoholic beverages.



Cruise Preparation

Baggage Policies & Packing Advice	7
Clothing	8
Preparing For Your Flight	8
Bon Voyage Gifts & Gift Packages	8
Weddings	9
As You Wish™ Dining	9
Dining Venues	9
Last-minute Checklist	10

BAGGAGE POLICIES & PACKING ADVICE

Insurance: Although we try to handle your bags carefully while they are in our possession, please be aware that Holland America Line cannot guarantee there will be no loss of, or damage to, your baggage or belongings. For this reason, we suggest you purchase baggage insurance before you leave home. Your travel professional can provide you with additional information if you are interested in this option.

Restrictions: Airlines, limousines and other transfer vehicles have baggage allowance policies which may limit the amount and/or weight of baggage you may take with you and/or impose baggage charges. You are responsible for complying with the policies. Please keep this in mind when packing.

Luggage Tag Information: Holland America Line is pleased to introduce new Holland America Line's Express Docs cruise documents, along with new luggage tags as of March 22, 2009! Please see the following important information about your luggage tags.

For guests who sail with us beyond March 22, 2009, and who have Holland America Line's Express Docs: The new luggage tags will be available for you at the pier prior to your final check in. Luggage tags will be located near the entrance to the pier area where you will be checking in your luggage. The luggage tags are clearly marked with your ship name. Please attach a tag to each piece of luggage you will be checking on the cruise. There is a space on the tag for you to print the following information; Name, Stateroom Number and Sailing Date.

For guests who sail with us beyond March 22, 2009, and who have paper documents: Luggage tags can be found in your document wallet that you received or are also available at the pier for your convenience.

Please Note: For security reasons, baggage without tags or owner identification may not be loaded on the ship. *If you should have questions or need assistance, Holland America Line representatives at the pier will be happy to assist you.*

Packing Advice: Holland America Line cautions against the use of garment bags with hanger hooks protruding from the top. We also suggest that you consider placing articles in clear plastic bags inside your baggage to minimize handling by airport security screeners. Pack shoes on top of other contents in your baggage to expedite the screening process. Finally, make sure that you label the inside of your carry-on and checked baggage with your name and contact information. Bear in mind that the screening process for any point of embarkation is similar to that at an airport. As such, all weapons and dangerous devices are prohibited and may result in denied boarding. For complete, updated information regarding travel, please check the official website of the Transportation Security

Administration at www.tsa.gov/index.shtm.

Please Note: Firearms, explosives, fireworks and illegal drugs of any kind are prohibited without exception.

Important: Do not pack your passport, medications, cruise documents or airline tickets in your checked baggage. (Remember that checked baggage might not be accessible at all times.) Keep these items close at hand in your purse or jacket pocket. We also strongly suggest that you carry or otherwise keep with you important items such as perishables, cash, credit or debit cards, jewelry, gold, silver or similar valuables, securities, financial instruments, records or other valuable or business documents, laptop computers, cellular telephones, cameras, or other video or electronic equipment, hearing aids, electric wheelchairs, scooters, binoculars, film, videotape, computer disks, audio disks, tapes or CDs. Holland America Line assumes no responsibility for the items listed above. If Holland America Line, due to any cause whatsoever, is liable for loss of, damage to or delay of your property, the amount of Holland America Line's liability will not exceed US\$100 (US\$600 for guests who have purchased the Cancellation Protection Plan) unless you have specified to Holland America Line in writing the true value of your property and paid to Holland America Line before departure of the cruise or cruise tour, 1% of the value in excess of US\$100 or US\$600, as applicable. In that event, Holland America Line's liability will be limited to the amount so specified. Please contact the ship's Front Office immediately upon embarkation for forms and additional details for declaring additional value; you must have your baggage with you when making these arrangements. Holland America Line's baggage policy is further detailed in the Baggage section of your Cruise Contract.

Medication: Your prescription medication should be kept close at hand in your purse or carry-on bag rather than in your checked baggage. Be sure to bring a sufficient supply of medication and transport it in the original container. It is also a good idea to carry a written list of your medications in case they are lost. The list should include the name of the drug, dosage and times taken. In case of emergency, Holland America Line will assist in filling prescriptions. However, please note that additional charges will apply.

Luggage Forwarding: Door-to-Door luggage service is available for guests to arrange delivery from your home to the ship, as well as from the ship back to your home. Holland America Line has partnered with Luggage Forward to offer the convenience of door-to-door luggage delivery service. To make luggage delivery arrangements, or inquire about pricing contact Luggage Forward directly:

Luggage Forward, Inc

35 Kingston Street

Boston, MA 02111

Email: info@luggageforward.com

Phone: 1-866-416-7447

Fax: (617) 482-1194

CLOTHING

The right clothing can make a big difference in the enjoyment of your cruise. First and foremost, dress for comfort. Daily life aboard ship and in ports of call is laid back and casual. Warmer climates call for clothing made of lightweight, breathable fabrics. For cooler climates, we suggest casual clothes that can be layered easily and possibly a raincoat and waterproof hat or umbrella and gloves. Certain shore excursions may require particular attention to clothing. For example, certain churches, or other places of worship, may not allow tank tops or short pants.

Bring a swimsuit as all of our ships have pools and whirlpools. You may wish to bring more than one outfit for the water. We ask that you wear shoes and a cover-up over a bathing suit when walking through the interior of the ship. If you would like to jog on the sports deck or work out in the Fitness Center, bring workout gear.

Footwear should include comfortable walking shoes for visits ashore and sandals or rubber-soled shoes for strolling on deck.

Evening dress falls into two distinct categories; Formal or Smart Casual. Smart Casual can be defined as slacks and sports shirt or sweater for men and skirt or trousers and sweater or blouse for women. Printed T-shirts, swimsuits, tank tops and shorts are not allowed in the restaurants or public areas during the evening hours.

On festive Formal evenings, ladies usually wear a cocktail dress or gown and gentlemen usually wear a suit and tie or tuxedo. There are approximately two formal nights per week. Formal wear for ladies and gentlemen can be pre-ordered for your use during your cruise by calling Cruiseline Formalwear at 1-800-551-5091. Your formal wear will be in your stateroom when you board.

In order to complement your fellow guests, Holland America Line asks that you observe the suggested dress code throughout the entire evening.

Electrical Appliances: All staterooms are equipped with standard 110 AC and 220 AC outlets. Guests with pre- or post-cruise hotel packages may want to bring converters and/or adapters for their hotel stay. All staterooms are equipped with hair dryers. If more outlet space is necessary, only Holland America Line provided power bars are to be used. Please contact at the Front Office for more information.

For safety reasons, ironing is prohibited in your stateroom. Ironing facilities are available at the self-service laundry rooms for your convenience on ships except the *ms Eurodam*, *ms Noordam*, *ms Oosterdam*, *ms Westerdam* and *ms Zuiderdam*. Full laundry and valet services are available on all of our ships.

PREPARING FOR YOUR FLIGHT

For guests with the Fly Cruise Plan, updated flight information is available through the end of flight travel at www.virtuallythere.com.

Please use password: **HOLLANDAMERICA** (no space)

The reservation number can be found in your documents on either the e-ticket advice or paper tickets. Since arrival and departure times are subject to last minute changes by the airlines, we recommend that you call your airline(s) 24 hours before your initial flight departure (72 hours for international flights) to verify all of the flight numbers, and departure and arrival times shown on your ticket. Plan to be at the airline counter at least two hours before flight time for domestic flights and three hours before flight time for international flights. Guests are responsible for arranging special air travel related service requests such as, advance seat assignments, in-flight meal requests, wheelchairs and any other airline services. Holland America Line and its onboard staff are not able to confirm flights from on board our vessels.

Please Note: For more information about onboard airline check-in please read the SIGNATURE EXPRESS BAGGAGE SERVICE section.

Park 'N Fly: As Holland America Line guests, you are invited to enjoy discounted parking rates throughout the Park 'N Fly Network offering service from more than 60 major airports nationwide. You can receive savings of up to 50% on airport parking and avoid the stress of finding a place to park. Enjoy premium airport parking from the leading off-airport parking provider on secure and well-lit lots. Frequent shuttles will pick you up and drop you off at your car with direct car to terminal service and baggage assistance. Convenient reserved parking is also available near Port Everglades, Ft. Lauderdale, Florida. Please visit the Holland America Line website (www.hollandamerica.com) and click on "For Booked Guests", then follow the 5 easy steps to arrange your parking:

1. Planning & Advice
2. Transportation Tab
3. Arrival, Boarding & Disembarkation
4. Airport Parking
5. Book parking at the special Holland America Line rate

BON VOYAGE GIFTS & GIFT PACKAGES

If you would like to send a bon voyage gift to one of your fellow guests or set up your own private bon voyage toast, we invite you to do so. Holland America Line also offers a variety of gift packages for guests celebrating a birthday, anniversary, honeymoon or other special event.

Take a moment to consult our Gift Order selections or visit our website at www.hollandamerica.com. Next, contact your travel professional or our Ship Services Department at:

Holland America Line
Ship Services Department
300 Elliott Avenue West
Seattle, WA 98119

Phone: 1-800-541-1576
Fax: 1-800-207-3547
Email: hal_ship_services@hollandamerica.com

Gift Order items include a variety of alcoholic and nonalcoholic beverages, clothing, casino chips and flowers at very reasonable prices. Packages such as “Renewal of Vows,” “Happy Anniversary,” “Romantic Voyage” and “Just for Us” include a variety of services and mementos to commemorate your special occasion. Gift orders must be prepaid and received two weeks in advance of sailing. Some last-minute gift orders may be charged to your VISA®, American Express®, MasterCard® or Discover® card up to two working days before sailing.

HOLLAND AMERICA LINE REWARDS™ VISA® CARD

Use your new Holland America Line Rewards Visa Card and you'll be on your next dream vacation before you know it. Earn Holland America Points on qualifying purchases you make and DOUBLE Holland America points for any Holland America Line purchases. To learn more and apply for the Holland America Line Rewards Visa Card, please visit www.hollandamericavisa.com/hal3.

WEDDINGS

Make your wedding dreams a reality. Choose from a wedding on board one of our five-star ships or at a land destination. Then sail away for your romantic honeymoon! For more information contact Royal Ocean Events at 1-888-475-5511 or www.royalwed.com. For more information on Europe destinations, contact The Wedding Experience at 1-877-580-3556, (305)-421-1260 or www.theweddingexperience.com.

AS YOU WISH™ DINING

Our As You Wish dining lets you select the venue and style that suits you. Choose from a festive five-course affair, a quick casual dinner for two or an intimate meal in the privacy of your stateroom.

DINING VENUES

The Elegant Main Dining Room:

1. A luxurious dining experience in a room graced with fine art and antiques.
2. Five-course menus feature offerings from classic preparations and regionally inspired cuisine to vegetarian options.
3. Choose traditional pre-set seating and dining times or a flexible open schedule — the choice is yours to make prior to departure for your cruise.

Flexible Open Dining: Open dining times are 5:15pm to 9:00pm. The same gracious service and sophisticated five-star dining experience is featured, as it is in pre-set dining. If you choose the flexible, open-seating program in the main Dining Room, you may make reservations by calling the dining reservation number on board or simply come to the Dining Room during dining hours.

Dining reservations operators are available daily between 8:00am and 11:00pm.

Classic Pre-Set Dining: The traditional pre-set dining times are 5:45pm and 8:00pm in the main Dining Room. You may request seating time, table size and indicate with whom you wish to dine. All such requests should be made before sailing through your travel professional. Requests will be confirmed or waitlisted at the time of booking. Table number and table size are on request only, and will be assigned by the Dining Room Manager on board.

The status of your seating request will be listed on your Cruise Contract. Your seating assignment will be noted on your guest card upon boarding.

Please Note: You may choose either flexible/open dining or classic pre-set dining in the Main Dining Room, at the time of booking.

The Pinnacle Grill Experience:

- Intimate dining featuring Sterling Silver Beef® and fresh seafood.
- Luxurious appointments including Bvlgari® china, Riedel® stemware and Frette® linens.

Other Delightful Dining Options:

- The Lido with fresh, cooked-to-order specialties for breakfast and lunch.
- Made-to-order entrees and tableside waiter service in the Lido for dinner.
- The Terrace Grill on deck, featuring hamburgers, hot dogs and a taco bar.
- Complimentary 24-hour In-Room Dining.
- Daily afternoon tea service, elevated to Royal Dutch High Tea once per cruise.
- Late-night snack each night.
- On the *ms Eurodam*: Tamarind, for exotic Pan-Asian cuisine; Canaletto, featuring relaxed Italian fare; and Slice, a casual pizza bar.

Special Diets and Meals: Kosher*, Passover Seder dinner, gluten-free, salt-free, fat-free, baby food, diabetic and other special dietary needs can be accommodated only with advance notification. For special meal arrangements, please contact the Ship Services Department at 1-800-541-1576 at least 90 days prior to departure.

While we try to fulfill all requests, it may not always be feasible. Holland America Line reserves the right to substitute products when specified brands are not available. An additional charge may be applied. Reconfirm any special requests with the Dining Room Manager after you board.

**Kosher meals are prepared off the ship in a kosher kitchen, frozen and brought to the table sealed in their original containers. There is no kosher kitchen on board, nor do we have kosher dishes, utensils, pots or pans on the ship. Cooking facilities onboard are not considered kosher.*

LAST-MINUTE CHECKLIST

To ensure peace of mind while you are away, we offer this last-minute checklist of things to do before you go.

- Be sure to bring proper **Proof of Citizenship, picture ID, visas (if applicable) and proof of any applicable immunizations.** For more information, see the IDENTIFICATION REQUIREMENTS section.
- Verify that your identification and travel documents, medication, jewelry, camera, film, cash and other valuables with you in a carry-on bag and will be available at all times.
- Visit our web site (www.hollandamerica.com) to complete **Online Check-in.**
 - Please print out a Signature Preferred Boarding Pass at least **72 hours** prior to your sail date.
 - Shore Excursions are available to purchase online until 5 days prior to the sailing.
- Pack properly.
 - Bring your travel and health insurance information and have it handy at all times. Also, pack enough medication sufficient for the duration of the cruise/cruise tour. Keep it with you at all times and remember to leave all medication in its original container. It is also a good idea to bring your prescription for eye glasses or contacts.
 - Both casual clothes and formal clothes will be essential during your cruise. For more detailed information, please see the PACKING ADVICE and CLOTHING sections.
- Leave copies of your passport, airline tickets, traveler checks and any credit cards you plan to use with a family member or trusted friend.
- Inform your bank or credit card company that you are traveling abroad to avoid any challenges with using your credit card on the cruise
- Distribute your ship communications cards to friends and relatives.
- Place a card with your name and address inside your baggage, as well as on the outside.
- Have the post office hold your mail. Also, stop your newspaper delivery or have a friend or neighbor take them in for you.

CRUISE PREPARATION



Arrival Advice

Arrival Instructions	11
Airport Taxes	11
Airline Delays	11
Transfer Policy & Information	11
Boarding Procedures	12
Visitor Policy	12

ARRIVAL INSTRUCTIONS

The following information should be used as a guideline only. For specific arrival instructions applicable to your itinerary, please consult your Travel Documents.

Hotel or Overland Tour Packages: If you have purchased a Holland America Line vacation package or hotel accommodations, you will find information in your documents. Be sure to keep your documents on your person or in your carry-on bag so you can access them easily.

Arriving by Homeport Motor Coach: Guests who are participating in our Homeport Motor Coach Program must make arrangements to be picked up and dropped off at their designated meeting point as overnight parking is not available. Pick-up/drop-off locations and meeting times are listed in your itinerary.

Arriving by Air: If guests have purchased the Fly Cruise Plan and transfers on the day of embarkation through Holland America Line, Holland America Line representatives will be stationed in the airport baggage claim area or outside the customs area (depending on local customs regulations), to greet guests and assist those who are eligible to be transferred to the pier. Transfer reservation and flight arrival information are required at least 14 days prior to their sailing date for representatives to assist guests at the airport. If you do not see our representatives, please have one paged. Please refer to cruise documents for more specific information regarding your arrival airport.

For guests who have made independent flight plans, but did purchase transfers on the day of embarkation through Holland America Line, you must advise us of your air schedule at least 14 days prior to arrival to receive the transfer service.

AIRPORT TAXES

Some countries impose an arrival or departure tax, which cannot be included on an air ticket. In most cases this is paid by each guest upon check-in and may have to be paid in the local currency.

AIRLINE DELAYS

From time to time guests encounter transportation delays in getting to their cruise ship. If it is your day of sailing and this happens to you, please follow these guidelines:

- Advise your airline at the earliest opportunity that you are a cruise guest destined for a sailing that day. Working directly with the carrier is important, as the airlines are usually able to arrange alternative flights.

- If you believe a delay will cause you to arrive in the port of embarkation less than two hours before the ship's scheduled departure or if you are concerned for any reason that the ship may leave before you arrive, our representatives may be able to advise you of arrangements to minimize disruptions in your vacation plans.
- Ask the airline to immediately advise our Air/Sea Department, or call us yourself at 1-800-628-4771* or 206-286-3294*.

** These numbers are provided for emergency use only; please do not call the Air/Sea Department unless it is your day of departure and you are experiencing a delay.*

Air/Sea representatives are available from 5:00am to 5:00pm Monday through Friday and from 5:00am to 4:00pm on Saturday and Sunday (Pacific Standard Time). For information concerning emergency procedures outside of these times, please see the EMERGENCY PHONE NUMBER section. All other questions and concerns regarding air arrangements should be directed to your travel professional.

For further information on our relationship with airlines, please refer to your Cruise Contract. If you have purchased air transportation independently from Holland America Line, you will be responsible for any and all expenses incurred when joining the ship in progress.

TRANSFER POLICY & INFORMATION

For guests who have made independent flight plans and purchased any of Holland America Line's transfers, you must advise Holland America Line of your air schedule **at least 14 days prior** to arrival. If Holland America Line does not receive the flight information, you will not receive the transfer and will be ineligible for reimbursement of this service.

Airport/Ship Transfers: Transfers from the port city airport to the ship on the day of embarkation, and from the ship to the port city airport, on the day of disembarkation are available for purchase. To purchase transfers, please have your travel professional call Holland America Line at 1-800-426-0327.

Airport/Hotel Transfers: Transfers between airport and hotel are provided to all guests who have purchased a Holland America Line hotel package regardless of whether you have purchased the Fly Cruise Plan or have made independent flight plans.

Temporary Terminations: Transfers are NOT included for guests choosing to deviate from standard Holland America Line services. If there is a break in service or "temporary termination" (e.g. guests who have Holland America Line's Fly Cruise Plan but have chosen to stay in a non-Holland America Line hotel, or guests who arrive early), no transfer will be provided.

Accessible Transfer Requirements: If you require a lift for boarding the transfer vehicle, please contact us or have your travel professional advise our Access & Compliance Department (please see contact information in the GUESTS WITH DISABILITIES section) as soon as possible, so we can arrange a special transfer. Reconfirm any special transfer requirements for disembarkation with the Front Office on board. In cities of embarkation and/or disembarkation outside the United States, wheelchair-lift vehicles may not be available. Please call Access & Compliance for detailed information.

BOARDING PROCEDURES

We strongly encourage you to check-in at our website at www.hollandamerica.com and complete the check-in process online. Once you have completed the online check-in process, you will print a Signature Preferred Boarding Pass. Upon arrival at the pier, you will need to present your Signature Preferred Boarding Pass, have your proof of citizenship verified and your picture taken. We will give you your stateroom key and you will be on your way!

Please Note: This online check-in procedure must be completed at least **72 hours** prior to your sail date.

Please have the following documents ready to present at check-in:

- Signature Preferred Boarding Pass
- Proper proof of citizenship

For those guests unable to use our online service, please arrive at the pier for embarkation approximately 3 hours prior to ship sailing time to allow time for list preparation and transmittal. Please have the following documents ready to present at check-in:

- Express Documents or Cruise Ticket from your Travel Documents
- Completed Immigration Questionnaire with Credit Card Authorization Form (on its back side)
- Credit Card
- Proper proof of citizenship

Please understand these are new regulations of the U.S. Department of Homeland Security.

Ship Identification Card: Upon completion of check-in you will receive a ship identification card. This ship ID card serves as your identification for security procedures when embarking and disembarking the ship, and for making purchases on board. It is also your access card to your stateroom.

Please Note: Please have your ship ID card and a valid picture identification issued by an official government agency ready and available whenever getting on or off the ship, as you will need to scan your ship ID card at the gangway for boarding, and also as you may be required to present a valid picture ID to pass through terminal security.

Embarkation Time: Embarkation times are printed on the front of your Cruise Contract. Generally, early embarkation will commence at 11:30am. There may be certain exceptions due to local governmental procedures. Due to new port security requirements at Port Everglades in Ft. Lauderdale, Florida, we are unable to provide our guests with access to the cruise terminal prior to 11:00am. Keep in mind that you must be on the ship at least one hour before departure, and the gangway will be pulled thirty minutes before sailing.

Please Note: There are restrictions on consuming alcoholic beverages brought on board the ship; please refer to the ALCOHOLIC BEVERAGES BROUGHT ON BOARD section.

You may also receive arrival documentation from Immigration when arriving at the airport. Please keep this available for check-in. The Front Office on board may collect your passport to prepare for immigration formalities. Your passport will be returned once the ship has completed immigration procedures.

Our embarkation procedures are smooth and easy—you carry nothing but your hand baggage, and everything is beautifully organized. Although embarkation may begin as early as 11:30am, our previous sailing guests will have just disembarked and we will still be in the process of preparing the ship for your cruise. We anticipate that your stateroom will be ready at approximately 1:00pm. Therefore, you are welcome to make yourself at home in the bar, lounge or pool areas. Your baggage will arrive in your stateroom later that afternoon. The Lido Restaurant embarkation buffet and the Pool Grill will open at 11:30am.

VISITOR POLICY

In today's era of heightened security, Holland America Line has implemented a "no visitor" policy. We regret any inconvenience this may cause. Friends may easily arrange to send a bon voyage gift directly to your stateroom, or you may throw a party of your own for fellow guests. For more information please see the BON VOYAGE GIFTS & GIFT PACKAGES section.



Shipboard Life

Activities on Board	13
Shore Excursions	13
Our Commitment to the Environment	14
Club HAL® Youth Program	15
Services on Board	15
Shipboard Meals	17
Medical Facilities & Services	17
Smoking Policy	18
Communication at Sea	18
Shipboard Account	19
Currency Exchange	19
Hotel Service Charge	19
Signature Express Baggage Service	19

ACTIVITIES ON BOARD

What will you do today? There are so many choices on your Holland America Line cruise. You may choose to participate in as many (or as few) activities as you wish. Each evening you will receive a complete schedule of shipboard activities to help you plan your following day. The choices are endless. You can play bingo, learn interesting facts about your itinerary's ports of call at a Travel Guide presentation, watch a cooking demonstration in our Culinary Arts Center, get creative in the Digital Workshop powered by Windows, learn a line dance or challenge your mind in our daily trivia events. You may wish to sunbathe, swim or simply find a quiet spot and do nothing at all. In the evening you'll find a wide variety of music and entertainment, award winning production shows, theme nights, movies and more! There's never a dull moment on your Holland America Line cruises.

SHORE EXCURSIONS

Shore excursions will help you make the most of your time in port and provide you with the best transportation and guide services available. Holland America Line and independent third-party tour providers along the route have spent a great deal of time in the selection of shore programs ashore. You will find dozens of thrilling options in our programs. Please be aware, however, that although every effort has been made to present you with the best available facilities in the countries we visit, some tours may not have amenities such as air conditioning or toilets on buses.

Shore Excursions brochures have been enclosed with either your visa information letter or your travel documents. Shore excursions are available to book online up to five days before sailing. Visit our website at www.hollandamerica.com. You can easily book and pay for your desired tours, and check or confirm your reservation status 24 hours a day. You can also download detailed information about your excursions, view tour prices, and find answers to frequently asked questions. We recommend that you book your shore excursions prior to departure at our website; online reservations receive priority handling. Also, certain tours are limited, so pre-booking will enable you to avoid disappointment. Tours will also be available for purchase on board the ship. If you have pre-booked your excursions, your tour ticket(s) will be delivered to your stateroom on embarkation day.

The Collections of Holland America Line

What fascinates you? A cooking class with a local chef? A private car, complete with driver and guide so you can explore near or far? A chance to encounter wildlife up close? The Collections of Holland America Line represent a small subset of the shore excursions offered. Each collection offers its own particular focus and is available in select ports.

- **Medallion Collection:** A series of exclusive experiences designed to accommodate our most discerning guests, Medallion Collection tours are chosen to provide an in-depth perspective offering unparalleled access to exclusive events and sights. First-class style, smaller groups — elite activities for a privileged few.
- **Encore Collection:** Been there, done that? Think again. Our Encore Collection, designed especially for repeat guests, lets you discover what lies beyond the well-known attractions you've already seen. Barbecue with Argentine gauchos or ride an Icelandic pony across a windswept beach near Reykjavik. These tours showcase hidden gems, unusual angles and inside stories.
- **World Wonders Collection:** Natural treasures, architectural marvels, technical wonders: to the Seven Wonders of the World we add our own nominations based on decades of leadership in global travel—the sandstone city of Petra, the moai statues of Easter Island, and the Great Wall of China, among others. What they have in common is the ability to inspire awe.
- **Signature Collection:** This exclusive option for independent-minded travelers lets you completely customize your time ashore by reserving private transportation in advance. Whether you travel by car or minivan, customized boat or classic floatplane, you choose the companions, and sights that suit you.

Please Note: No refund or allowance can be made to any guest who might, for any reason (including medical), cancel, deviate from, or otherwise not participate in the excursion. Guests on any excursion who elect to leave the automobiles or motor coaches in the shopping area or elsewhere must provide their own transportation, at their own expense, to return to the port. Please consult the Shore Excursions brochure for complete details of the tour cancellation policy.

OUR COMMITMENT TO THE ENVIRONMENT

At Holland America Line, cruising is our passion. We are equally passionate about protecting and preserving the pristine destinations that we visit. For many years we have emphasized environmental stewardship and conservation in our operations. We believe that safeguarding our guests, crew, ships and the environment are the right thing to do, and essential to the success of our business.

We Take Care of the Planet

Our five star ships are as environmentally sound as they are beautiful. Here are just a few of our environmental efforts:

- **Environmental Management System:** All of our ships are ISO 14001 certified by LRQA, North America.
- **Environmental Officers:** Stationed onboard every ship to provide environmental training and oversee shipboard compliance with environmental requirements.
- **Advanced Waste Water Purification Systems:** These systems treat wastewater to a higher quality than most municipal treatment systems and the discharge is clean enough to meet the drinking water standards in many communities.

- **Shore Power:** The *ms Noordam*, *ms Westerdam*, *ms Oosterdam* and *ms Amsterdam* have been modified to connect to shore power in Seattle and where compatible facilities are available.
- **Cleaning Supplies:** All ships use environmentally friendly cleaning products.
- **Recycling:** All ships have recycling programs to collect bottles, cans, paper, cardboard and plastic.
- **Dry Cleaning Machines:** Traditional dry cleaning equipment is being replaced by machines that use non-hazardous detergents formulated with soy, banana and orange extracts.
- **X-ray Facilities:** Traditional x-ray developing equipment has been replaced with digital technology to eliminate the use of hazardous chemicals on board.
- **Soy Inks:** All onboard materials are printed with environmentally friendly soy-based ink.
- **Water Conservation:** All ships have installed low flow systems for toilets and showers in the staterooms.

Environmental Awards

Our activities to protect the environment have not gone unnoticed Holland America Line has recently won the following environmental honors:

- **Kuoni Green Planet Award:** The *ms Noordam*, *ms Oosterdam* and *ms Westerdam* each won a Green Planet Award in 2006 from this Swiss travel company.
- **Porthole Magazine – Most Eco-Friendly Cruise Line:** 2006/2008 Holland America Line won the Most Eco-Friendly Cruise Line award for a commitment to responsible environmental practices through a comprehensive, fleet-wide program and innovations.
- **NOAA Conservation Partnership Award:** Presented to Holland America Line in 2006 for our Whale Strikes Avoidance training program.
- **Virgin Holiday Responsible Tourism Awards – Best Cruise or Ferry Operator:** Holland America Line received this prestigious award in London on November 12, 2008. Partners in this award program included Responsibletravel.com, The Daily Telegraph, World Travel Market, Geographical Magazine, and BBC World News. 2008 was the first year in which this category was included and Holland America Line was featured in a beautiful 2-page spread in the magazine Responsible Travel.

Guest Invitation to Environmental Excellence

We invite and encourage all of our guests to assist us as we work to protect the environment both on board and while ashore. You can make a difference in the following ways:

- **Towel Reuse Option:** Similar to many fine hotels, you can obtain fresh towels simply by leaving the used ones on the floor. To reuse your towel, simply hang it on the bathroom door or towel rack. Reusing your towels will reduce energy, water and detergent consumption required for daily washings.

- **Turn Off Stateroom Lights and TV When Not in Use:** As when ashore, energy conservation goes a long way to helping us protect the environment.
- **Close Exterior Doors:** Guests conserve energy when they help to maintain interior temperatures and humidity by assuring that exterior doors in both public and stateroom spaces are not left open unnecessarily.
- **No Garbage Overboard:** Never throw anything overboard. Trash receptacles and ash trays are provided on all open decks for your use.
- **Use the Proper Waste Container:** We have placed waste containers for paper, aluminum cans and garbage throughout the vessel. Separating your waste will go a long way in proper and efficient waste management.
- **Protect Wildlife:** Never disturb or feed birds and other wildlife. Do not touch or handle coral reefs when SCUBA diving or snorkeling.
- **No Litter Ashore:** Do not leave trash on beaches – use trash receptacles ashore or carry it back on board with you.

CLUB HAL® YOUTH PROGRAM

Holland America Line offers great activities for both kids and teens. Club HAL offers programs for children and pre-teens ages 3 to 12, and our teen program is prepared for our 13- to 17- year-old guests. Each ship* is staffed with professional Youth Staff dedicated to making sure children have a great time. Some of the fun-filled activities include crafts, Teen-only disco, karaoke sessions, trivia contests, sports events, movies and more. Each child will also decorate his or her own Club HAL T-shirt. An activity schedule for each age group will be delivered to your stateroom each evening. Activities are offered for kids (ages 3-7), 'tweens (ages 8-12) and teens (ages 13-17). The 'tween and teen program has an open-door policy, which allows participants to come and go as they please. All activities are supervised. The Youth Staff is not responsible for any child if he/she leaves the activity.

**On the ms Prinsendam, youth activities are offered for ages 5-17.*

All other ships offer youth activities for ages 3-17.

SERVICES ON BOARD

Holland America Line ships have all the amenities and services you expect to find in a fine resort — as our valued guests, we don't want you to lack a thing!

Beauty Salon/Spa: The Greenhouse Spa & Salon is our premier, luxury day spa. Greenhouse operates the most distinctive and luxurious spas on sea and land integrated with proven home spa programs and exclusive products that enhance life and promote well-being. All professional services are available from 8:00am until 8:00pm. Appointments are strongly suggested (particularly for formal nights) and can only be booked on board.

Salon Services

- Hairstyling
- Coloring
- Manicures & Pedicures
- Facial treatments
- Teeth whitening
- Slimming treatments

Spa Services

- Aroma stone massage
- Thermal suite and hydro pool
- Aromatherapy treatments and massage
- Seaweed wrap or float

Fitness Center: To help you stay in shape, all Holland America Line ships are equipped with a fitness center that offers both aerobic and strength-training equipment. In addition, a professional attendant is available to instruct you in proper techniques of using the equipment. Hours are from 6:00am until 9:00pm. Personal training and specialty classes such as yoga and Pilates are available for a nominal fee.

Swimming: Swimming pools are available on board all of our ships, and there are plenty of deck chairs and beach towels available for your use on deck. If you would like to take a beach towel ashore, please ask your steward. Should you need anything—a refreshing beverage or a lap blanket—an attentive deck steward will be nearby to assist you.

Please Note: Children who wear any type of swimming diaper or who are not toilet trained are not allowed into the swimming pool and whirlpool areas.

Shops On Board: All Holland America Line ships offer a variety of wonderful merchandise from around the world. Items for purchase range from jewelry to clothing and souvenirs, together with a selection of toiletries and drug store sundries. The shops on board offer duty-free/tax-free prices for most items and are open during the posted hours when the ship is at sea. The shops are not open in port in accordance with Customs regulations.

Port Shopping Ambassador Program: Your cruise vacation would not be complete without experiencing some of the world's best duty-free shopping. On selected cruises you'll find Holland America Line's Port Shopping Ambassador Program. It is designed to assist you in finding the finest treasures in the ports of call at savings of 20-60% below U.S. prices. Each recommended merchant was selected on the basis of price, selection, reputation, quality, service and a commitment to shopping satisfaction. Therefore, you can shop with confidence knowing these merchants are committed to stand behind your purchases.

Check your Daily Program for location and times of the Port Shopping Ambassador's Talk. Important Customs information and shopping maps will be provided at the talk. For additional shopping information, tune in to Shopping Treasures in Paradise on your in-stateroom TV. Also, be sure to enjoy the Compass book located in your stateroom.

Photo Gallery: Your Image Creators are located at your Photo Gallery and are pleased to present for you many rich and varied photographs capturing your cruise. We welcome you to consult with your Image Creators for all your photographic requirements. We offer a fully digital service bringing you the latest in high quality, photographic products such as JC Black Label, an exclusive portrait service for Holland America Line's

guests that redefines cruise photography — sittings are limited so please book early.

Panraven Memorybooks: We are pleased to offer you a unique opportunity to capture and share your memories in a beautiful leather book printed and bound by one of our nation's premier bookbinders. Your story is waiting and already contains your itinerary, professional photography, and details of the ship and your ports of call. You decide how you would like it personalized. You may choose to go online after your cruise, add your own camera photos and make whatever edits to the story you choose before sending your book to print, or you can tell us which photos taken by your Image Creators you would like to have placed in your story and simply wait for your book to arrive. Either way, you'll enjoy a rich keepsake that will keep the memories of your adventure alive for years to come on your coffee table or bookshelf. Available onboard through the Photo Gallery.

Art Auctions: Picture yourself in a friendly bidding war for an unusual etching or winning a free work of art just for attending! Experience the thrill of bidding on great works of art including fine art, animation, and sports memorabilia. Registration is free and there is no obligation to bid. Complimentary champagne will be served at the auctions.

Casino: A wonderful world of chance, skill and luck awaits you in our new Club 21 casino. A gamut of games from sizzling slots with huge progressive jackpots to a parade of poker games is there for your enjoyment. Our friendly international staff will teach you how to play, entertain you in a tournament or patiently wait while you decide whether to hold or fold. The Club 21 casino is not open in port and certain restricted waters and you must be 18 or over to play.

Future Cruise Consultant:

Benefits of Booking On Board

The best time to book your next cruise is while cruising with Holland America Line. Book your next Holland America Line cruise while on board and you will receive up to US\$200 per stateroom shipboard credit, good for your next Holland America Line cruise.

Limited time offer, Savings for Onboard Bookings Only

Book on board and you can reserve your next cruise at a reduced deposit of only US\$100 per person and receive a shipboard credit of up to \$200.00 per stateroom. (If you choose to take advantage of Holland America's cruise Cancellation Protection this payment will also be due at time of initial deposit.) No additional deposits will be due until final payment. The reduced deposit applies to sailings of 36 days or less. Should you need to cancel your reservation, your reduced deposit will be applicable to another Holland America Line cruise within the next four years.

PLEASE ADD: . This offer is not applicable for Grand World Voyage, Grand Voyages or segments thereof. Please speak to the Future Cruise Consultant regarding other amenities for these voyages.

Book the Stateroom or Suite You Want

When you book on board, you have a much better opportunity of receiving the stateroom or suite that best suits your traveling style; this includes preferred accommodations on our most popular and unique itineraries. That's because your Future Cruise Consultant has immediate access to Holland America Line's reservation system and can view all availabilities on all sailings. The time to reserve your desired stateroom, suite and dining preference is now.

Your booking will be credited to, and finalized by, your preferred Travel Professional

We appreciate the relationship you have with your travel professional and want to assure you they will be credited for bookings made onboard, just let us know. In addition, Holland America Line will honor any pricing or amenities that your travel professional extends in addition to your onboard offers.

*To book, or for more information, simply visit your **Future Cruise Consultant**.*

Explorations Café: The Explorations Café, powered by *The New York Times* offers a comfortable coffee house environment where you can browse through one of the most extensive libraries at sea, view a wide array of audio and video programming or simply read the morning paper. Guests can also enjoy fresh pastries and their favorite espresso drink provided by Torrefazione Italia. Additional highlights include: Internet stations, travel-related crossword puzzles and large jigsaw puzzle tables. An Internet Café is available in lieu of the Explorations Café on *ms Prinsendam* and *ms Oosterdam*. In addition, all Holland America Line ships now have wireless "hotspot" connectivity.

Religious Services: In order to serve the spiritual needs of our guests, we provide the following services. Your Daily Program will list times and locations.

- **Catholic:** Mass is held daily.
- **Interdenominational*:** An interdenominational service is conducted each Sunday and on appropriate religious holidays.
- **Jewish*:** A Sabbath Eve Oneg Shabbat Gathering is held each Friday.

**Anyone wishing to volunteer to lead these services should contact the Event Manager. A rabbi is on board for High Holiday services.*

Please Note: Religious services may not be able to be held on embarkation/disembarkation day. Please contact the Front Office for more details.

Stateroom: Your stateroom is furnished with a ship-to-shore telephone to enable you to easily call anywhere in the world, 24 hours a day (prices are found in your stateroom directory). You'll also find ample closet

and drawer space, individually controlled air conditioning, a television for viewing CNN, movies and onboard features.

Laundry: For your convenience, we offer full laundry and dry cleaning service. You will find laundry bags and price lists in your closet. Self-service Laundromats are situated in various locations on board, except the *ms Eurodam*, *ms Noordam*, *ms Oosterdam*, *ms Westerdam* and *ms Zuiderdam*. The facility consists of washers, dryers, irons and ironing boards. Specially priced laundry and pressing packages are available at favorable prices. Please check your welcome folder for details. There is a charge for the use of washers and dryers. For safety reasons, ironing clothes in your stateroom is not allowed any time.

SHIPBOARD MEALS

In addition to breakfast, lunch and a five-course dinner, you can enjoy afternoon tea, a stir-fry or pasta buffet, an ice cream bar, hot hors d'oeuvres during the cocktail hours, an evening espresso or cappuccino, and the traditional late-night snack. Try the Terrace Grill, located on the Lido Deck, featuring hamburgers, hot dogs, a taco bar and a daily special. Complimentary In-room Dining is available 24 hours a day. Casual dining is available in the Lido Restaurant every night. Luxury dining options in the Pinnacle Grill, featuring the highest quality meat and fish, is available on all ships. Reservations may be made on board by contacting the restaurant manager. There is a nominal restaurant charge for the Pinnacle Grill and the Tamarind.

MEDICAL FACILITIES & SERVICES

Each Holland America Line ship has an onboard Medical Center staffed by licensed physicians and critical care nurses. While not a full-service hospital, the Medical Center is well equipped to handle most emergencies, as well as routine medical procedures.

A customary fee will be charged for services and medications dispensed (with the exception of meclizine for seasickness, Tylenol® and aspirin, which may also be dispensed at the Front Office). If you become ill or injured during the voyage and your diagnostic and/or care requirements exceed the capabilities of the Medical Center, you will be transferred to medical facilities ashore. Please note that Medicare and many health insurance plans DO NOT cover the cost of medical care at sea, in foreign countries, or for air evacuation. For this reason, guests are encouraged to obtain travel medical insurance prior to travel.

If you have a chronic medical condition, please bring a recent report from your physician. The medical staff on board is not available for daily care, unless you are hospitalized in the Medical Center. You must be able to care for yourself. If you are unable to function independently in the area of eating, dressing or attending the ship's safety drills, you must bring a caregiver with you. Due to the limited medical facilities on board, we will not accept reservations for infants 6 months or younger for non-Transocean sailings, 12 months or younger for Transocean sailings at time cruise commences or women who will be 24 or more weeks pregnant at the time their cruise with Holland

America Line concludes. If you are pregnant, please provide a medical note from your physician stating the expected due date and confirming your medical fitness to travel.

Keep medication close at hand in your purse or in a carry-on bag. Be sure to bring enough prescription medicine to last throughout your cruise, because it may not be available on board or in the ports of call. Medication which requires refrigeration may be stored in the Medical Center and accessed during regular hours (8:00am to noon and 2:00pm to 6:00pm) at no charge. HAL is not liable for any damage done to medications stored in your stateroom's mini-bar. Guests requiring medication via injection should contact our Access & Compliance Department to have arrangements made for a sharps container to be placed in their stateroom free of charge. (Please see the contact information in the GUESTS WITH DISABILITIES section.)

Planning For Healthy Travel: International travelers can take a number of simple steps to avoid potential health problems before and during travel. If you are traveling to (or transiting through) Africa or South America, you may require a certificate of vaccination against yellow fever.

The vaccination can be administered only in a state-approved clinic. International travelers should contact their physicians, local health departments, or private or public agencies at least 4 to 6 weeks before departure to receive current health information on the countries they plan to visit, to obtain vaccinations and preventative medications as indicated, and to address any other special needs. Please note that washing your hands regularly with soap and water will greatly reduce the risk of contracting illness and infections while traveling. In absence of running water, use alcohol-based hand sanitizers. This is especially important before and after meals, or whenever you are in contact with common surfaces (i.e. railings, buttons, countertops, etc.), after handling money and after using the restroom. Travelers' diarrhea (TD) is the most common illness to affect travelers. Each year between 20%-50% of international travelers (an estimated 10 million persons) develop diarrhea. The onset of TD usually occurs within the first week of travel but may occur at any time even after returning home.

High-risk destinations include developing countries of Latin America, Africa, the Middle East and Asia. In areas where chlorinated tap water is not available or where hygiene and sanitation are poor, travelers should be cautioned that only the following may be safe to drink: beverages such as tea and coffee, made with boiled water; and canned or bottled beverages, including water, carbonated mineral water and soft drinks.

PassportMD Medical Concierge: Before your cruise, you can sign up and receive your own personal health concierge to help you create a portable, secure and accessible health record that contains organized lists of your medications, allergies, medical conditions, x-rays and your doctor's information. PassportMD is ideal for everyone who takes medications. Receive your own health concierge by going to: www.HALPassportMD.com or by calling 1-866-608-9311.

SMOKING POLICY

Cigarette smoking is allowed in designated areas, such as certain lounges and on outside decks. Smoking is not permitted at any time in the dining areas, corridors or common areas. Cigar and pipe smoking is permitted on outside decks only except when cruising Antarctica. Our ships do not have 'nonsmoking' staterooms; but all rooms are thoroughly cleaned after each cruise to assure the comfort of our guests. Smoking is not allowed in the showrooms during performances.

COMMUNICATION AT SEA

Telephone: Direct ship-to-shore telephones are provided in each guest stateroom. You may easily place a call to friends, relatives or business associates during your cruise, reception permitting. Similarly, friends and family in the U.S. and Canada may contact Holland America Line ships by direct dialing the following number:

1-866-HAL-SHIP (1-866-425-7447)

Callers should know the ship name, party name and the stateroom number before dialing. Callers at home may also contact each ship directly by dialing the International Access # (011 from the U.S.), Ocean Code # and Ship #.

Ocean Codes: 870

Ship Numbers:

<i>ms Amsterdam</i>	324-437-011
<i>ms Eurodam</i>	764-857-176
<i>ms Maasdam</i>	764-611-948
<i>ms Noordam</i>	324-602-821
<i>ms Oosterdam</i>	324-541-710
<i>ms Prinsendam</i>	324-412-610
<i>ms Rotterdam</i>	764-663-213
<i>ms Ryndam</i>	764-092-063
<i>ms Statendam</i>	764-343-692
<i>ms Veendam</i>	764-567-077
<i>ms Volendam</i>	324-596-816
<i>ms Westerdam</i>	324-412-810
<i>ms Zaandam</i>	324-644-212
<i>ms Zuiderdam</i>	324-530-410

For example: Someone calling from the U.S. to the *ms Amsterdam* would dial 011-870-324-437-011.

Please Note: All phone calls, whether inbound or outbound, are charged a satellite tariff. Outbound calling rates are posted near your stateroom telephone and will be billed to your onboard account. These charges are applied to **ALL** calls including calls to 800, 877 and 888 numbers. Please do not use a credit card or phone card; your onboard account will be billed in addition to

the cost of the phone card or credit card. Collect calls are not possible from the ship.

Email and Internet: Guests can send and receive electronic mail in real time via satellite link 24 hours a day (satellite conditions permitting). Internet is accessible from the comfort of workstations on board or from a personal laptop that can access "hot spots" which are found in most of the common areas. If you use a personal email provider, make sure to bring your user id and password and email recipient addresses with you. The ship offers a variety of pricing options to suit individual needs from pay as you go to discounted time plan packages. A one-time activation fee of US\$3.95 will be applied on your first login only.

Guests who do not have an email provider:

Holland America Line has provided each guest with a CruisE-mail™ address. There is a US\$3.95 per message fee to use CruisE-mail and a nominal fee for Internet usage.

Your CruisE-mail address (Before August 1, 2009):

Your first initial + last name + your cabin number (with no spaces in between) + @*"shipname"*.cruisemail.net.

Example: John Smith, in Cabin 38 on the *ms Rotterdam*, His CruisE-mail address will be: **jsmith38@rotterdam.cruisemail.net**

Your CruisE-mail address (After August 1, 2009 with the exception of *ms Amsterdam*):

Your first initial + last name + your cabin number (with no spaces in between) + @cruisemail.net.

Example: John Smith, in Cabin 38 on the *ms Rotterdam*, His CruisE-mail address will be: **jsmith38@cruisemail.net**

Some Internet services not available, please contact Ship Services for further information.

Fax Service: Please contact the Front Office for details if you wish to send a fax. Additional communication instructions can be found on board the ship in your stateroom information directory.

Mail: Letters and postcards may be mailed from the ship while in ports of call. Guests may purchase stamps while in port or purchase them with U.S. dollars from the Front Office. All mail is subject to local post office procedures and will be charged at the rates applicable to the port in which it was mailed.

Mobile Phones: You can now take advantage of your wireless communication devices while at sea. With our onboard service you can make and receive calls using your own mobile phone and telephone number. The service allows you to stay in touch with family and friends at home or locate fellow guests onboard. Depending on your home provider, you can also send and receive text messages. In addition, data services including internet browsing are available to users of PDAs, such as your Blackberry®.

Charges will appear as roaming charges on your regular

monthly bill from your telecommunications carrier. Rates are similar to international roaming rates and are set by each home carrier. Check rates with your home carrier prior to traveling. The use of the service requires compatible wireless/mobile phones or devices with a home carrier that has a roaming agreement with our service provider. Some prepaid phone plans are supported currently. Service is not guaranteed by Holland America Line. Other restrictions and limitations may apply. For additional information, please visit: www.cellularatsea.com.

SHIPBOARD ACCOUNT

Our cashless society is designed to make your life on board as simple as possible. Your account is activated when you board the ship. Purchases are made by presenting your stateroom key card and signing the receipt.

If you have completed your check-in via Holland America Line Online Check-In, then your debit/credit card information is already within our system. If you have not completed Online Check-In you will need to register your credit or debit card (Holland America Line Rewards™ Visa® Card, Visa®, MasterCard®, American Express® or Discover®) on embarkation day during the check-in process in order to use your onboard account for shipboard purchases.

A “hold” will be placed on your credit card for each day of your cruise. For cruises lasting up to 25 days, the hold is US\$60.00 per person, per day. For cruises longer than 25 days, the hold is US\$30.00 per person, per day. If you charge in excess of the held amount, the accumulated excess charges will be added to your pre-authorized amount at the end of each day. Some banks may keep the preauthorization in place for up to 30 days, so you are encouraged to register a credit card rather than a debit card. Please inform your credit or debit card issuer (bank) that your card will be used on a Holland America Line ship. This will prevent delays in the pre-authorization process on board. At the end of your cruise you will receive a final statement charging you only for the final balance. Please note that all charges made to your credit card for your onboard purchases will be made in U.S. dollars. To learn more and apply for the Holland America Line Rewards Visa Card and start earning points toward your next cruise, please visit www.hollandamericavisa.com/hal3.

Any conversion to a currency other than U.S. dollars is at the discretion of the issuing bank. If you do not want to register a credit or debit card and would like to open an account, please see the Front Office to submit a cash deposit. Holland America Line does not accept any personal checks onboard.

Please Note: There is not an Automated Teller Machine (ATM) Machine available onboard.

CURRENCY EXCHANGE

The U.S. dollar is the only currency accepted on board Holland America Line ships. We will accept U.S. traveler’s checks. A currency exchange service will be available for selected itineraries, such as the European and World Cruise programs. In most ports of call you may easily exchange U.S. dollars into

the local currency. Banks, airports and major hotels often offer this service. In many countries you can also use your ATM card to obtain local currency. Most locations will accept major credit cards and some will accept U.S. dollars. If you choose to use U.S. dollars, Holland America Line recommends that you carry smaller denominations such as ones, fives, tens and twenties.

Cash Advance: Cash advances are available at the Front Office. All cash advances are subject to restrictions. A 3% service fee will be added to your onboard account for all cash advances.

HOTEL SERVICE CHARGE

Our crew works very hard to make sure that every aspect of your cruise meets the highest standards. This includes those crew members who serve you directly, such as Dining Room wait staff and the stewards who service your stateroom each day. There are also many others who support their efforts whom you may never meet, such as galley and laundry staff. To ensure that the efforts of all of our crew members are recognized and rewarded, a daily Hotel Service Charge is automatically added to each guest’s shipboard account. The Hotel Service Charge is US\$11 per guest per day and is subject to change without notice. If our service exceeds or fails to meet your expectations, you are free to adjust this amount at the end of each segment and/or voyage. The Hotel Service Charge is paid entirely to Holland America Line crew members, and represents an important part of their compensation. A 15% service charge is automatically added to bar charges and Dining Room wine purchases.

In terminals, airports, ports of call and on shore excursions, we suggest that you extend gratuities consistent with customary local practices.

SIGNATURE EXPRESS BAGGAGE SERVICE

Holland America Line, together with selected airline partners, is pleased to offer you the opportunity to check-in for your flight home from the comfort of your ship.

This service offers you the most relaxing disembarkation possible:

- Your bags are picked up right outside your stateroom door and delivered to your final airport destination, hassle free!
- Your airline boarding pass is delivered to your stateroom the night before disembarkation. There is no waiting to check in at the airport!

Signature Express Baggage Service is available in selected departure ports. On board ships where this program is available, each guest will receive an enrollment form, detailing any port specific restrictions in the stateroom upon embarkation. A small fee for this service will apply.



Disembarkation

Disembarkation Procedures

20

DISEMBARKATION PROCEDURES

At the beginning of the cruise each guest will receive a disembarkation form that will allow them to coordinate transfers and baggage handling arrangements. Please fill out the form and return it to the Front Office as soon as possible.

A disembarkation presentation will be given shortly before the end of your cruise. This presentation will outline important procedures regarding customs formalities, baggage handling, travel arrangements, and important information regarding disembarkation. It is essential that at least one member of your party attend this presentation.

On the last night of your cruise you will need to place your baggage outside your stateroom before you retire. Please do not place your baggage over the emergency floor lighting. Please make sure that the appropriate baggage tags are affixed to your baggage, because the tags include your departing flight information.

As previously mentioned in the **BAGGAGE POLICIES & PACKING ADVICE** section, **you should not place valuables in your tagged luggage.** Holland America Line recommends that each guest keep all personal identification, airline tickets, customs forms, medications and other important items along with the clothes and shoes he or she intends to wear the last day. Place them in a carry-on bag or keep them with you so you can access them easily. Please remember that important items such as perishables, cash, credit or debit cards, jewelry, gold, silver or similar valuables, securities, financial instruments, records or other valuable or business documents, laptop computers, cellular telephones, cameras, or other video or electronic equipment, hearing aids, electric wheelchairs, scooters, binoculars, film, videotape, computer disks, audio disks, tapes or CDs should not be placed in the baggage you placed outside your stateroom.

On the morning of disembarkation, guests with no credit card payment need to settle their onboard account on the morning of disembarkation. Promotional credits are non-refundable. Cash deposits can be made on the last day of the cruise.

The ship's estimated arrival time at the port of disembarkation is shown on your cruise itinerary. Generally, the ship is subject to certain government procedural requirements upon arrival. Once completed, all guests will be allowed to disembark. Disembarkation is usually completed within two to four hours after the ship's arrival. All guests are required to disembark the ship at this time. Outbound flights should be scheduled with plenty of time for transfers from the ship to the airport. The amount of time you allow to transfer from the ship to the airport will depend on the disembarkation port.

Please Note: Please read the **SIGNATURE EXPRESS BAGGAGE SERVICE** section, for more detailed information. The Signature Express Baggage service is the most relaxing and hassle free disembarkation Holland America Line offers.

Elegance Delivered To Your Stateroom



Cruiseline Formalwear

Customer Service 1.800.551.5091
Order on line: www.cruiselineformal.com

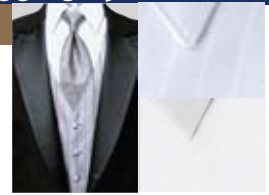
Dress yourself in the elegance and style that is perfect for all the formal activities on your cruise. Let Cruiseline Formalwear deliver beautifully tailored formal wear directly to your stateroom. Perfect Fit.... Perfectly Elegant.



DELUXE TUXEDO PACKAGE

PACKAGE INCLUDES:

- Classic black jacket with matching trousers
- 2 Soft microfiber lay down collar shirts (one solid and one pinstripe in white only)
- Exclusive Calvin Klein full-back vest with matching long tie and hanky in your choice of color (choose from the Calvin Klein vest selection)
- Upgrade set of elegant cufflinks (your choice of silver or gold)



DELUXE BLACK & WHITE TUXEDO PACKAGE

PACKAGE INCLUDES:

- Classic black jacket with matching trousers and an additional white dinner jacket
- 2 Soft microfiber lay down collar shirts (one solid and one pinstripe in white only)
- Exclusive Calvin Klein full-back vest with matching long tie and hanky in your choice of color (choose from the Calvin Klein vest selection)
- Upgrade set of elegant cufflinks (your choice of silver or gold)



Calvin Klein Vest Selection available exclusively with Deluxe Tuxedo Package rental



BLACK



APPLE



PLATINUM



ROSEWOOD



LILAC

CONTEMPORARY BLACK TUXEDO

PACKAGE INCLUDES:

- Black jacket and matching trousers
- 2 White lay down Collar Shirts
- Designer vest and long tie set in your choice of 7 stylish colors listed below
- Elegant set of black/silver cufflinks



CONTEMPORARY BLACK & WHITE TUXEDO

PACKAGE INCLUDES:

- Classic black jacket with matching trousers and an additional white dinner jacket
- 2 lay down collar shirts
- Designer vest and long tie set in a choice of 7 stylish colors shown below
- Elegant set of black/silver cufflinks



BLACK



ICE



PERIWINKLE



KIWI



GARNET



CORAL



FLAMINGO

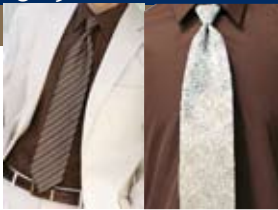
Customer Service 1.800.551.5091

CRUISE CASUAL SUIT

PACKAGE INCLUDES:

- Tan Jacket and pants (belt not included)
- 1 Lay down collar shirt (choice of solid white, ivory or chocolate)
- 1 longtie (choice of chocolate diagonal stripe or paisley print in cocoa)
- Handkerchief to match the tie

OPTIONAL UPGRADE:



Elegant Light Tan Shoes the perfect match for the casual suit.



LADY'S APPAREL

Cruiseline Formalwear has designed an elegant line of evening wear that is perfect for all the formal activities on your cruise. The styles have been selected to complement each other. Rental garments are available. For more information please visit our web site.



BLACK VELVET SKIRT DK BLUE GLITTER TOP GOLD BLOUSE GOLD GLITTER TOP LADY'S SHOES

CLASSIC BLACK TUXEDO

PACKAGE INCLUDES:

- Black jacket and matching pants
- 2 White Wing Collar Shirts
- Black Cumberbund & Bow Tie Set
- Cufflinks & Studs



WHITE DINNER JACKET PACKAGE

PACKAGE INCLUDES:

- White Dinner Jacket & Matching Black Pants
- 2 White Collar Shirts
- Black Cumberbund & Bow Tie Set
- Cufflinks & Studs



BLACK & WHITE COMBO PACKAGE

PACKAGE INCLUDES:

- Classic Black Jacket & Matching Black Pants and an additional White Dinner Jacket
- 2 White Collar Shirts
- Black Cumberbund & Bow Tie Set
- Cufflinks & Studs



Customer Service 1.800.551.5091

OPTIONAL RENTAL GARMENTS & ACCESSORIES

- Formal Shoes



- Formal Socks



- Suspenders



CLASSIC PRINT VEST & BOW TIE SETS



BLACK BURGUNDY SILVER BLUE EMERALD GOLD

FORMAL ACCESSORIES FOR PURCHASE

SILK POCKET SQUARES



BLACK BURGUNDY RED SILVER WHITE

FASHIONABLE CUFFLINKS & STUD SETS



Classic Round Cufflink/Stud Set with Black Stone Silver

Classic Round Cufflink/Stud Set with Black Stone Gold

Classic Square Cufflink/Stud Set with Black Stone Silver

Classic Octagon Cufflink/Stud Set with Black Stone Gold



Elegant Cufflink Only Sets with BlackStone in Silver or Gold

Order on line: www.cruiselineformal.com



Cruiseline Formalwear





To place your order CALL: 1.800.551.5091
or visit: www.cruiselineformal.com

CHECK LIST & ORDER FORM

Ship _____ Cabin# _____

Sailing Date _____ Port _____

MEASUREMENTS

Height _____ Weight _____

Coat Size _____ Chest Size _____

Pants:Waist _____ Inseam _____ Outseam _____

Shirt:Neck _____ Sleeve _____

Shoe Size _____ Width _____

GARMENTS

Deluxe Tuxedo Package **PRICE** _____ **Quantity** _____ **Total** _____
\$130

Choice of vest: † Black † Apple † Platinum † Rosewood † Lilac

Deluxe Black & White Tuxedo Package **Quantity** _____ **Total** _____
\$160

Choice of vest: † Black † Apple † Platinum † Rosewood † Lilac

Contemporary Black Tuxedo Package **Quantity** _____ **Total** _____
\$110

Choice of vest: † Black † Ice † Periwinkle † Kiwi † Garnet † Coral † Flamingo

Contemporary Black & White Tuxedo Package **Quantity** _____ **Total** _____
\$145

Choice of vest: † Black † Ice † Periwinkle † Kiwi † Garnet † Coral † Flamingo

Cruise Casual Suit **Quantity** _____ **Total** _____
\$90

*Shirt Upgrade: You may substitute the package shirt for an upgrade Chocolate
Pinstripe Microfiber shirt for \$10 † or you may rent an additional shirt for \$15 †
Light Tan Shoes \$15 †*

Classic Black Tuxedo **Quantity** _____ **Total** _____
\$85

White Dinner Jacket Package **Quantity** _____ **Total** _____
\$85

Black & White Combo Package **Quantity** _____ **Total** _____
\$120

TOTAL: _____

OPTIONAL RENTAL GARMENTS & ACCESSORIES

Black Formal Shoes **Quantity** _____ **Total** _____
\$12

Black Formal Socks **Quantity** _____ **Total** _____
\$6

Black Suspenders **Quantity** _____ **Total** _____
\$5

Classic Vest & Bow Tie Sets **Quantity** _____ **Total** _____
\$15

Choice of vest: † Black † Burgundy † Silver † Blue † Emerald † Gold

Designer Vest & Long Tie Sets **Quantity** _____ **Total** _____
\$20

Choice of vest: † Black † Ice † Periwinkle † Kiwi † Garnet † Coral † Flamingo

TOTAL: _____

FORMAL ACCESSORIES FOR PURCHASE

Silk Pocket Squares **\$10.50**

Choice of colors: † Black † Burgundy † Red † Silver † White

Classic Round Cufflink/
Stud Set with Black Stone Silver **\$25 †** Classic Round Cufflink/
Stud Set with Black Stone Gold **\$30 †**

Classic Square Cufflink/
Stud Set with Black Stone Silver **\$35 †** Classic Octagon Cufflink/
Stud Set with Black Stone Gold **\$45 †**

Cufflink Only Sets with Black Stone in Silver or Gold **\$15 †** **TOTAL:** _____

PAYMENT

PLEASE NOTE: Some cruises require orders two weeks before sailing.

Prices are based on domestic sailings which are less than 21 days. European sailings are slightly higher. For more information please contact Cruiseline Formalwear by phone or through our website.

Card Holder Name _____

Card Number _____ Exp. Date _____

† Visa † Master Card † American Express † Discover

For Lady's Apparel Please Visit Our Website